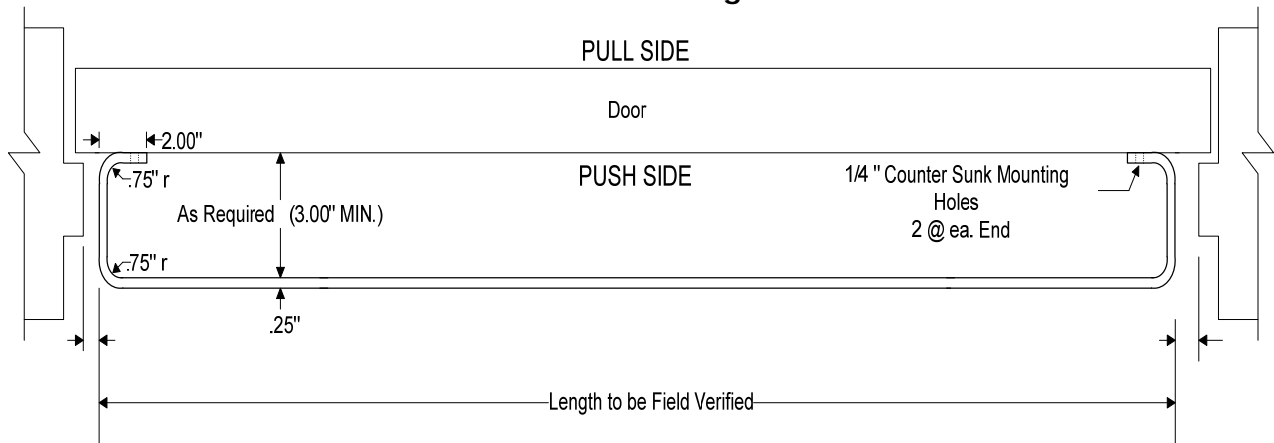


DIVISION \_\_\_\_\_

Specification Section # \_\_\_\_\_

**Reverse Flange Flush Mount Aluminum Door Shield: ALDSFM****DETAILS: Flush Mount Door Shield Reverse Flanges: ALDSFM**

Specify: 1/4" x 4" or 1/4" x 6" 6061 T6 Aluminum Alloy (Anodized)

Door mounted protection designed to guard the door handles from high impact. Can be mounted on both sides of the door.

**Materials: Rail**

- 1 Material: Material shall be 1/4 inch x (specify 4 inch or 6 inch) 6061-T6 extruded rectangular aluminum bar with 1/8 inch radius edge. Federal specification QQA-200/8.
- 2 Finish: Clear sulfuric anodized to military specification A8625 Type II. Note: anodizing to be performed after all cutting, drilling, counter-sinking and bending.
- 3 Packaging: Rail to be covered with 4 mil vinyl on all surfaces and packed in plywood crates for shipping to site.

**BRACKET MATERIAL:** NO BRACKETS NEEDED**MOUNTING HARDWARE:** AS RECOMMENDED BY MANUFACTURER